

SKYLAND

UNITED METHODIST CHURCH

LOVE · GROW · SERVE



Skyland Weekly Newsletter

June 4, 2026

A Glance at the Week Ahead!

Thursday, June 4, 4-7 pm Families meeting at Auction House

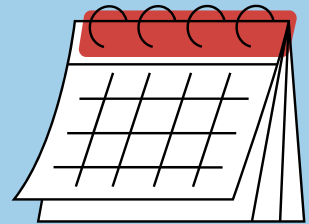
Saturday, June 6, 8 am Habitat Work Day

Sunday, June 6, 9 am & 11 am Worship, **10 am** Adult small groups. Youth trip to Carowinds (all day)

Monday, June 8, 6 pm Mission team meets

Tuesday, June 9, 3:30 pm Ice Cream Gathering @ Annie B's.

6 pm Board of Stewards meeting



Open Season for Self-Nominations

Currently, the Church's Nominations and Leadership Committee is inviting anyone who is an adult member at Skyland to prayerfully consider becoming a part of the Board of Stewards beginning January 1, 2027. If you would like to fill out an "interest form" and review a description of what it means to be on the Church's Board, please contact Joe Tarpley (or leave word with Jennifer in the Church's office during weekly office hours). This process will be ongoing throughout the summer.

Pastoral Visitation

Please be sure to notify Joe of any pastoral concerns you might have or know of within our community of faith. Joe is eager to call on any who might have specific needs. As always, Joe is available for any routine visits, appointments, lunch or coffee "dates." Contact Joe or the church's office to set up a time.

Join Your Skyland Church Family for Ice Cream

We have set up some "meet" times for ice cream this summer at Annie B's Homemade Ice Cream (64 Long Shoals Road). Join us for our first gathering on June 9 at 3:30 p.m. The summer days can be long and hot; Ice Cream can be the "ticket to heat relief!"

Board of Stewards

The Board of Stewards will meet on Tuesday June 9th, at 6 p.m. in the fellowship hall. Click [HERE](#) to view the agenda. All are welcome to attend!

We've Launched Our Campaign

If you were in church this past Sunday (or at our Town Hall meeting over a month ago) or if you have received a letter in the past 24 hours, you are now aware that we are in a kind of "capital campaign" season at Skyland. As stated, there are significant changes that need to be made to our HVAC systems. This will run us into the 10s of 1000s of dollars (once we make our purchases, rent our crane, set up our new systems, etc...). Additionally, there are some cosmetic things that need to happen. We need to paint in places. We need to upgrade certain furnishings. There are electrical, plumbing, audio visual considerations that need to be taken into account. Much of this work has been delayed for far too long. If we do not join hands and join with our resources, our capital situation is likely to worsen as months come and go.

Please read your letter. Importantly, please reach out to me if you have any questions or concerns about how we are addressing these physical problems and garnering the financial resources to pay the bills. The feeling of your Board of Stewards is that we should not borrow the money. We can utilize our own resources that we have; still, that will deplete much of what we have in terms of "cash in the bank." Thus, it is wise and prudent to ask for the help of the congregation.

I would ask you to, kindly, to mark your checks/envelopes "capital improvements" (or something close so that we know how to designate the monies we receive). Of course, you can always go online and make a contribution. We are still a very vibrant congregation with so much to offer one another and the community in which we are situated. Skyland has a very positive reputation in and around the Asheville area. How we respond to the needs of our campus will be reflected in that reputation as well. Thank you for your support. I just know we can live into the building transformations that have to happen in order to be successful in ministry.

Regards, Joe

Summer Fun Days Registration!

Our first summer fun day will be June 14th from 4-6 p.m. This event is for rising kindergartens through 6th grade. Click [HERE](#) to register today.

We're looking for youth and parent volunteers to help make our Sunday Funday a fun and memorable event for our children. If you're interested in helping, please contact the church office or email Jaime Graber We'd love to have you join us!



Manna Market Opportunity

Join us for our next market on Monday, June 15 any time from 2:15-4:30. Help is needed setting up canopies and table as well as welcoming and serving the shoppers. There's also an opportunity to read to the children as they await the start of the market. Contact Patty at 828-243-7250 if you'd like to help with any of these ways.



The Value of a Prayground

Recently, the idea of a new "Prayground" was presented to our Board of Stewards. The Board heard the presentation and unanimously decided that it was in the best interest of the Church to move forward with the idea. I have heard from, maybe, 3 people about some concern for this and how this might affect the Skyland 11am worship service going forward. I would like to offer a few considerations in case the number of concerned people exceeds 3.

First, some may be wondering, "what is a Prayground?" This is a designated area within a worship space where young children can engage in age-appropriate, worship-centered activities during worship. The goal is to establish a specific area within our worship spaces where even our younger church attendees may engage more fully in worship. Some may wonder, "...isn't this the purpose of children's church and/or the nursery." Perhaps you might think of it as a bridge between the experience of children's church/the nursery and being a full participant in the life of a worshipping congregation.

A second consideration is that not everyone who attends a church worship service is comfortable leaving her/his young children in the capable (and background checked) hands of our staff/volunteers (in a location other than in the sanctuary/fellowship hall). Thus, the Prayground can be that space where a family with a young child (or with young children) can quietly gather while still attending to matters related to worship, ritual, and other traditions of the appointed hour.

As a child grows and develops, s/he will likely turn from a coloring sheet on a Prayground table to singing the songs of faith or contributing an offering when the collection plates are passed. If we are serious about being an inviting church and being welcoming toward guests, this may very well be an important step. It shows intentionality on our part for extending a hand of fellowship and love.

A third consideration could be related to how it is used (and we will learn as we grow into the utilization of the designated Prayground space). I would imagine that quiet voices are used so that ALL people may hear and participate in worship. It behooves us to care for this space by treating the furnishings/surroundings gently and respectfully. While some Praygrounds are located in the front of the worship space/setting, we have chosen to place ours in the back (giving parents with children an opportunity to exit quietly if needed). This is part of our shared worship life together. It is just one opportunity to draw closer to God (something we want for ourselves and for all who come through our doors).

Prayground Cont'd

There are other considerations I am sure. And, I am confident that you have thoughts and opinions related to a Prayground. I would ask that you go with us for "a season" with the Prayground concept. I have been asked "...why can't this be in our fellowship hall?" The fellowship hall space is a lot more "fluid" in terms of how it is used on a daily basis (note, I said "daily basis." The needs in the fellowship hall change throughout the week based on a number of different groups who have need of it). I have also been asked by people who attend the 11am worship service "... how can we get more younger people and have more of an intergenerational experience?" Well, this could be one way to move in the direction of a more intergenerational experience. As we go through "a season" learning and growing related to the value of a Prayground, there are likely to be changes based on how it goes, how it is utilized. It may be that we take a "sabbath" from its usage on occasion. And, it may be that there will come a time when we need to suspend its use for (yet) "another season." We will learn.

I welcome your comments. I am concerned, always, about the things that concern you at Skyland. Feel free to reach out to me when you can.

Grace and Peace,

Joe

The Baltimore/DC Trip is "On!"

Maybe some were waiting to see if this trip would "make" before making a commitment. We now have enough persons who are committed to go for this trip to happen. So, we will run this opportunity by you all for a few weeks to see if any others are interested. The trip is for any recently confirmed youth, junior youth, older youth who are interested in a great multi-faceted, purpose-filled adventure!

We will be leaving on July 29th and returning on August 2nd. We'll be staying in Baltimore (more details on that location soon). One day we will spend in Washington seeing our denomination's headquarters there (next to the Supreme Court Building), seeing our capital and/or congress-folks' offices, take in one of the local museum, walk the National Mall. We are planning for many other excursions and adventures while we are away including the Lovely Lane United Methodist Church in Baltimore- the Mother Church of Methodism!

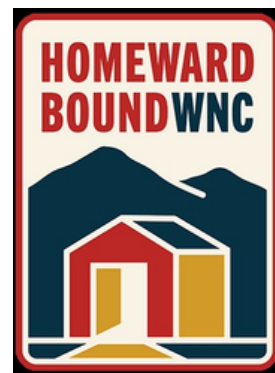
If you want to go, please contact Joe Tarpley right away. Cost per person is \$100 (plus some meals 'on your own'); it's a price you cannot beat this day and time. Other adults are planning to go, too. This will be a great opportunity for our young people in many ways. Stay tuned for more information here in this newsletter.

Reconciling Ministries Lunch & Learn

Join us on June 14 after the 11 a.m. Worship Service for a special Lunch & Learn on what it means for a congregation to be a Reconciling Ministries Church. The Reconciling Ministries Network (RMN) has been at work in our denomination since the 1980s. It has had an influence on the education of churches and church leaders across the denomination over justice matters and over the fears people have related to homosexuality. While there are many goals for RMN, one goal is to identify churches that are welcoming to all God's people. As we consider gospel mandates such as "...Go into all the world..." (Mark 16:15), it behooves any church to be that welcoming place for "...all creation..." (especially all of God's people). As we explore what it might mean for Skyland to become an RMN church, we invite you to come and learn about it and to ask questions. A panel has been created to present and facilitate discussion. Please sign up in the colonnade this weekend (or contact the church's office to get on the list, or contact Joe Tarpley).

Homeward Bound

Homeward Bound of WNC is one of the local nonprofit organizations that Skyland supports through our missions. Homeward Bound is working to place non-housed individuals/couples/families into permanent housing. Thanks to this support, during March and April, Homeward Bound moved 14 households into safe and stable homes. This included Steven, Destyni, and their two sons, who signed a new lease with the Supportive Services for Veteran Families Rapid Rehousing program. Terry Fields, Welcome Home Donation Center Program Manager, needs supplies to keep their move-ins going! Here are ways that you can assist: BATH TOWELS; WASHCLOTHS AND HAND TOWELS, 13-GALLON TRASH BAGS, PAPER TOWELS, AND BATHROOM TISSUE. If you'd like to donate any of these items, reach out to Sharon Blythe and she will see that they are delivered to the donation center.



Circle Meeting

The Have-a-Heart circle of United Women in Faith will meet in the fellowship hall at 4:15 on Thursday, June 11. All in our congregation are invited to hear the program which will be presented by a volunteer at the women's prison in Black Mountain. We will be providing black and white composition books for the women inmates for their journaling course. Questions? Call Dixie Liggett at 828-215-2114

Join Us For a Summer 'Read'

Gift of the Red Bird is Paula D'Arcy's luminous account of her rendezvous with God, silence, fear, hunger, and a little bearer of grace. Like many others who have gone before her, the author discovers the wilderness inside of herself and the dimension of Spirit that resides in the world of nature. She enacts the spiritual practices of listening, wonder, and being present. She recognizes the presence and love of God all around and even inside herself. Reading this stirring account, we find ourselves rejoicing in the epiphanies D'Arcy shares with us. Our conversations about the reading will begin on June 16 at 6:30 p.m. (sign up in the Colonnade or contact Joe Tarpley by email/phone). Joe will have books available the week of June 7. Subsequent meeting dates for book discussions are July 8 and August 4.

Pride T-Shirts

June is Pride month! It is a month to celebrate our LGBTQ+ community, and All Are Welcome is offering a way for you to do that here at Skyland! Last year, we created shirts for the Blue Ridge Pride Festival that takes place each September in Asheville. This year, we're offering you the chance to buy one of those shirts! They are \$15 each, and we will be taking orders for them throughout the month of June! You will receive them from a member of our team in mid-late July. There will be a sign up sheet in the colonnade for the month of June as well! See photo for what the artwork will look like on a tie dye shirt.



It's that time again for our Blood Drive.

With the urgent need for blood donations extra incentives are being offered by the Blood Connection as well as the chance for the \$500.00 GRANT for every 30 donations. This is really a win-win for the whole community. This will be our 4th opportunity to participate in such an amazing way to give back to our community or someone in need.

Please share with a friend and invite them to come along.

If you are 17 or older you can donate without a parental consent and if 16 you can donate with a parental consent.

2 ways to ensure you get your preferred time slot:

1. Scan the QRS code on the brochure and enter our code, which is 24SA
2. Call Debra Thornberry 828-775-4612.

SAVE LIVES. EARN REWARDS. DONATE TODAY.

Skyland United Methodist Church
1984 Hendersonville Road
Asheville, NC 28803

06/26/2026
01:30 PM-06:30 PM

Sponsor Code 24SA

\$500 grant giveback for every 30 completed donations

Silent Auction/ Taco Bar

Announcing the 5th annual Bridges Literacy Enrichment Program Silent Auction and Taco Bar, Wednesday September 9. Bridges' focus is on helping underserved 1st through 3rd graders from Estes Elementary improve their literacy skills. We need your donations! Consider donating new or gently used items of at least \$15 value. OR a service such as "cookie of the month" or a special skill you want to share. Drop off your donations at the Fellowship Hall store room from 8/18 through 8/27.

If you do want to donate or need additional information contact Sandi Heckman or Candace Hall

Prayer Team

The Prayer Team at Skyland United Methodist Church is a dedicated group of individuals committed to the ministry of intercession. Each day, team members lift up in prayer the concerns and joys submitted by church members, visitors, and the surrounding community. Whether through email submissions or spoken requests, every need is received with compassion and faithfully brought before God. Rooted in the belief that prayer is a vital expression of care and connection, the team seeks to be a spiritual support for all who are seeking comfort, healing, or guidance. Their quiet, consistent service reflects the church's mission to be a loving and prayerful presence in people's lives. To submit a prayer concern, share a praise, or Skyland family wanting to join this special team, please email prayers@skylandumc.com

VBS Registrations Forms

Click [HERE](#) for the camper form

Click [HERE](#) for the youth volunteer form

Click [HERE](#) for the adult volunteer form



Communications/Marketing Position Available

We are currently seeking a part-time Communications/Marketing Coordinator to join our church team. This 20-hour-per-week position is primarily on campus and will support our communications and outreach efforts. You can access the full job description [HERE](#); for more information, please contact Sharon Blythe at communications@skylandumc.com

Blessing Box

Current Needs: Canned fruit, spaghetti, beef Ramen, protein bars



Bridges End of Year Program

The Bridges Literacy Enrichment Program End of Year Celebration was a special event for the whole family to enjoy. The students and their siblings were entertained by the whimsical creations of a local balloon artist and had their faces painted with elaborate masks by a very talented artist from the high school. In keeping with what has become a tradition, we all sat together and shared great conversations over a delicious family-style meal. During the awards portion of the evening, each student was recognized for their tremendous academic growth this year and received a Certificate of Achievement and their "Readers are Leaders" gold medal.



ATSP End-of-Year Celebrations

Our preschoolers had an incredible year of learning and growth at Around the Son Preschool. This school year we celebrated sixteen graduates. Our end-of-year celebrations was a time to recognize their developmental milestones. We are so grateful for the teachers and staff that come alongside these students in preparing them for their next educational journey.





SKYLAND PASTORAL CONTACT

Need to reach out to a pastor?

Rev. Joe Tarpley, Pastor jtarples@skylandumc.com

Find more staff contact information on our website www.skylandumc.com

SUBMIT TO THE NEWSLETTER

In order to best serve you, we ask that newsletter submissions be submitted by Tuesday at 6pm (for the newsletter to go out on Thursday morning) to the Communications Coordinator, Anna Ahern, at:

newsletter@skylandumc.com. Please include information about the who, what, when, where, and why of what you need to share, and the Communications Team will take it from there. Thank you!

COMMUNICATIONS GUIDELINES

As we enter a new year the Communications Team is (again) providing a copy of the Communications Guidelines. If you have questions or concerns, please reach out to Sharon Blythe, Communications Team Leader at

communications@skylandumc.com

You will find the Communications Guidelines [HERE](#).

SUMC BOARD OF STEWARDS

Would you like to know who the Skyland leaders are for 2026? Can you name the Board of Stewards members or know how to connect if you want to be involved in a particular area of the church? Click the link to see the list!

<https://www.skylandumc.com/2026-leadership-team/>